

1 Carbon Dioxide Gas Neutralization Treatment Unit

1-1. Elepon E.C.A.P. Corporation - Carbon Dioxide Gas Neutralization Treatment Unit -

I. Standard type -----

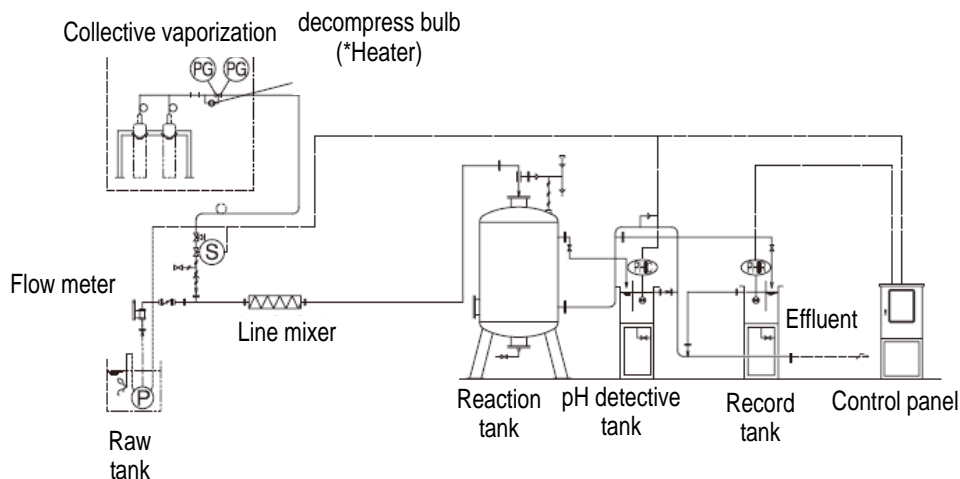
■ Features

- Keeping consumption volume of carbon dioxide to a minimum by high reaction speed and dissolution efficiency through utilizing both original line mixer and ejector
- Saving running cost by control of carbon dioxide supply through electromagnetic bulb control adjusted by pH meter
- Little installation space by unitization, easy operation, safety without secondary environmental pollution
- Equipping operation integrating hour meter, pH alarm circuit, and more accurate and safety equipment design by installation of pH detector, record tank



■ Overview

- The neutralization treatment could realize accurate and safety operation without causing secondary environmental pollution.



Flow diagram of treatment system

■ Performance/Specifications

- Specifications of PGN series

Type	Item	Capacity (m ³ /hr)	Raw water pump	Vaporization and Collection system	Electric power(kW)	Weight (kg)
PGN-5		5	50A × 0.4kW	GK-2 100V 0.3kW 2 gas bottle × 2 line	0.7	250
PGN-10		10	50A × 0.75kW	GK-3 100V 0.5kW 4 gas bottle × 2 line	1.24	400
PGN-20		20	65A × 2.2kW	GK-6 100V 0.6kW 7 gas bottle × 2 line	2.8	650
PGN-30		30	80A × 2.2kW	GK-9 100V 0.9kW 11 gas bottle × 2 line	3.1	850

- Note: Carbon dioxide gas is necessary to outtake gas

■ Applications/Experience

[Wastewater contained alkali]

- Ready-mixed concrete factory, second product factory from concrete, grindstone factory

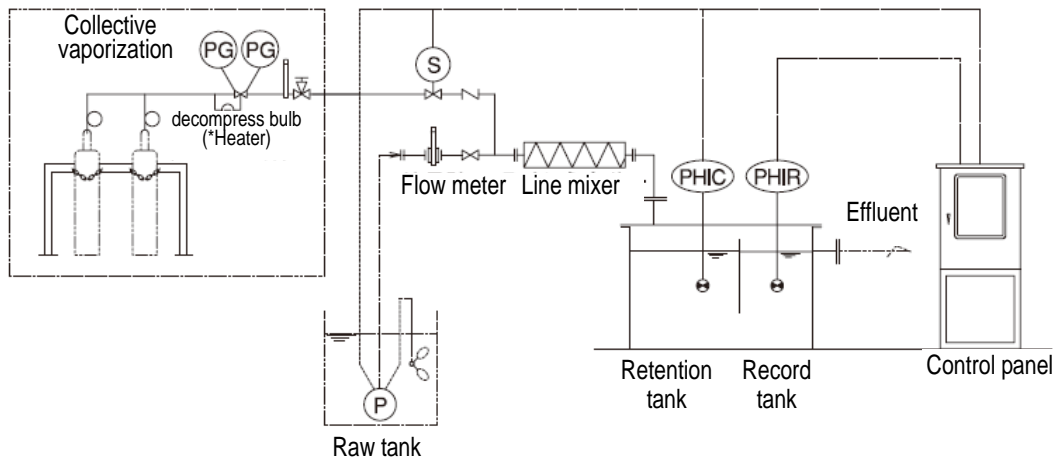
- Site of construction and engineering works, washing bottle factory, washing factory, Cleaning factory, dyeing and fiber factory
- Other various industrial wastewater contained alkali
- Pretreatment/after treatment of wastewater treatment equipment

II. Simple type -----

■ Features

- Simple type of PGN series

■ Overview



Flow diagram of treatment system

■ Performance/Specifications

- Specifications of PGS series

Specifications	Type	PGS-1	PGS-3	PGS-5
Treatment capacity		1 m ³ /hr	3 m ³ /hr	5 m ³ /hr
pH value of raw water		Less than 11		
Treatment temperature of raw water		Less than 40 centigrade		
Contact pipe caliber		20A	25A	40A

- Note: Wastewater containing concrete may be not handled occasionally.

Reference : Solubility to water under normal pressure of carbon dioxide gas

Temp.(Centigrade)	0	10	20	30	40	(50)	(60)	(100)
Solubility (m ³)	1.713	1.194	0.878	0.665	0.530	(0.436)	(0.359)	(0.260)

- Note: Solubility indicates value per 1 m³ water

■ Applications/Experience

[Wastewater contained alkali]

- Ready-mixed concrete factory, second product factory from concrete, grindstone factory
- Site of construction and engineering works, washing bottle factory, washing factory, Cleaning factory, dyeing and fiber factory
- Other various industrial wastewater contained alkali
- Pretreatment/after treatment of wastewater treatment equipment

■ Reference

Elepon E.C.A.P. Corporation

Shin-Daibiru Bidg, 1-2-1, Dojimahama, Kita-ku, Osaka, 530-0004, Japan

E-mail : sales@elepon.co.jp

URL : <http://www.elepon.co.jp>