

# 1 Filtration And Adsorption Unit

1-1. Elepon E.C.A.P. Corporation - Filtration and adsorption Unit -

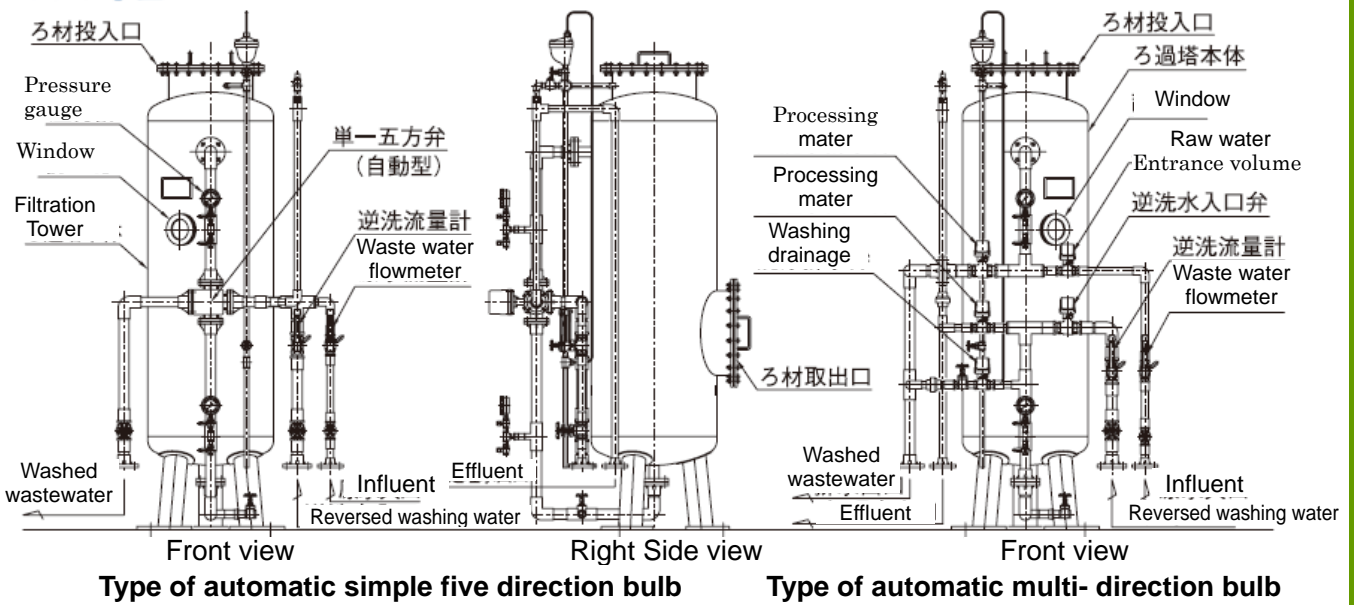
I. Sand Filtration Unit / Activated Carbon Absorption Unit -----

■ Features

- Small size and light, safety by little installation area
- Operation by two methods of manual and fully automatic type
- Fully automatic type is easy to daily maintenance without complex operation. The unit is excellent to operate with single five direction bulb and multi bulb.
- The unit can operate continuously in long term by reverse washing filler Inside filtration tower.

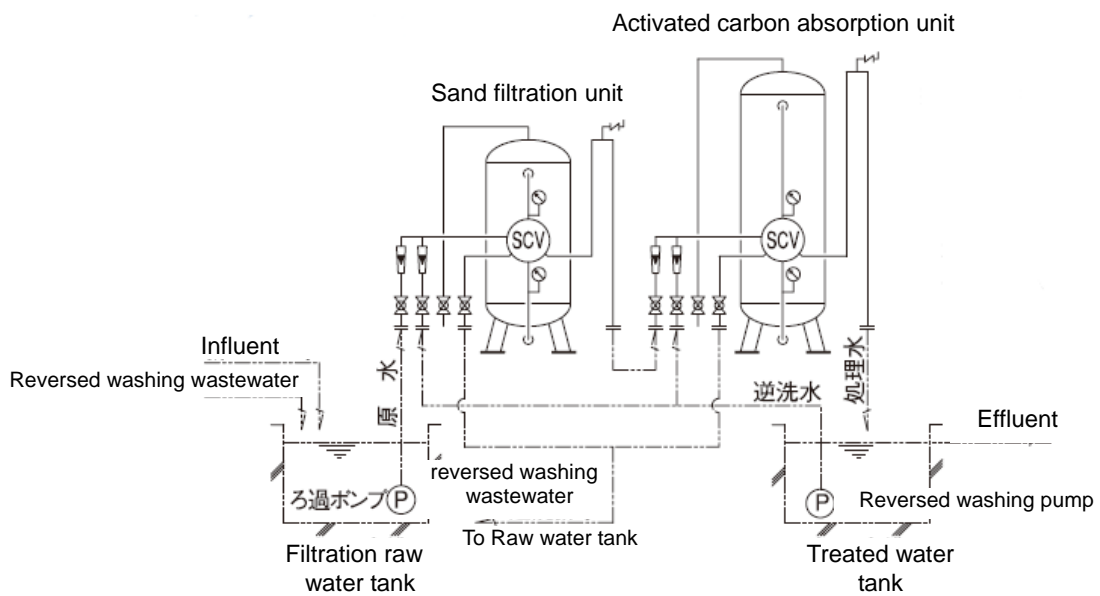


■ Overview



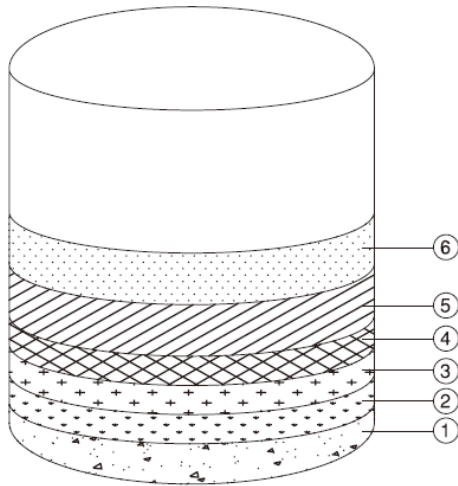
Type of automatic simple five direction bulb

Type of automatic multi-direction bulb



Flow diagram of treatment

### Structure of normal filter material of sand filtration unit



- No adaptation in case of activated carbon absorption, removal of iron/manganese, soft water generated from hard water

No.	name	Specifications
⑥	filter medium	anthracite 0.9mm
⑤	filter medium	sand 0.5mm
④	supporting bed No.4	gravel 2~ 4mm
③	supporting bed No.5	gravel 4~ 8mm
②	supporting bed No.6	gravel 8~12mm
①	supporting bed No.7	gravel 12~20mm

### ■ Performance/Specifications

- Specifications of RS, ARS, AR, RCS, ARCS, ARC series

<Sand filtration unit / RS series: manual simple five direction bulb>

Type	Capacity (m <sup>3</sup> /hr)	Main pipe caliber (mm)			Product size(core parts) (mm)	Product rough weight(kg)	Weight as operation (kg)
		Influent	Treated water	Reversed washing			
RS 40-15	1	25	25	40	φ 400 × 1,525SH	140	340
RS 50-15	2	25	25	40	φ 500 × 1,525SH	180	480
RS 60-15	3	25	25	40	φ 600 × 1,525SH	210	640
RS 80-15	5	40	40	50	φ 800 × 1,525SH	440	1,510
RS 110-15	10	40	40	65	φ 1,100 × 1,525SH	680	2,900
RS 140-15	15	50	50	80	φ 1,400 × 1,525SH	1,200	4,800

- Note: Capacity of treatment and specifications indicated above are different by water quality of wastewater.

< Activated carbon absorption unit / RCS series: manual simple five direction bulb>

- Note: Capacity of treatment and specifications indicated above are different by water quality of wastewater.

Type	Capacity (m <sup>3</sup> /hr)	Main pipe caliber (mm)			Product size(core parts) (mm)	Product rough weight(kg)	Weight as operation (kg)
		Influent	Treated water	Reversed washing			
RCS 40-24	1	25	25	40	φ 400 × 2,440SH	170	430
RCS 50-24	2	25	25	40	φ 500 × 2,440SH	210	510
RCS 60-24	3	25	25	40	φ 600 × 2,440SH	250	620
RCS 80-24	5	40	40	50	φ 800 × 2,440SH	530	1,850
RCS 110-24	10	40	40	65	φ 1,100 × 2,440SH	820	2,800
RCS 140-24	15	50	50	80	φ 1,400 × 2,440SH	1,400	4,900

- Note: Capacity of treatment and specifications indicated above are different by water quality of wastewater.

### ■ Applications/Experience

- Many kinds of wastewater treatment equipment
- Water supply, industrial water supply, processing water
- pretreatment such as ion exchange resin equipment, etc.
- Pool, public bath, etc.

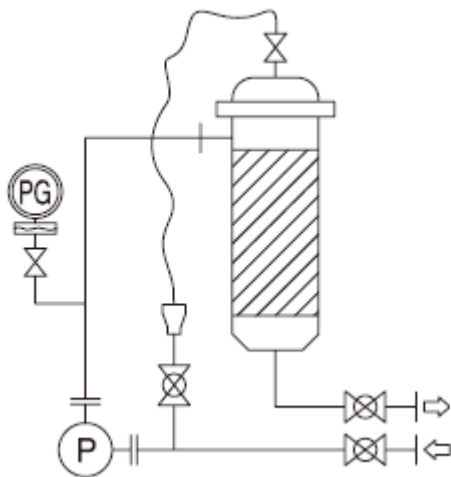
## II. Liquid Filtration Unit 'Cocoon series' -----

### ■ Features

- Bag or cartridge multi-use
- Light weight and high corrosion resistance, economy by one body molding of polypropylene
- Clean filtration of water, acid, alkali, chemical product, medicine, oil, etc.
- Simple design without liquor accumulation
- Saving space by compact unit
- Wide range for filtration accuracy from 1 micron to 800 micron
- Easy maintenance by adoption of large cartridge and mud possession capacity with 20 times as same as 10 inch cartridge as standard
- Molded mouth of filter bag contacted inside tank is sealed without leakage.
- Design superior to cheap, light weight, simple structure and easy dealing



### ■ Overview



### ■ Performance/Specifications

- Example for specifications

<Unit specifications >

- Max. treatment capacity: 18 m<sup>3</sup>/hr (as pure water)
  - \* Flow rate may decrease under loading state, however, treatment capacity: can be up by addition to filter.
  - \* Automatic stop control can be conducted by pressure meter to preserve pump.
- Body material: polypropylene(PP)
- Pipe material: polyvinyl chloride(PVA)

<Filter specifications >

- Body E-100B(back filter type), E-100C(cartridge type)
  - \* Body: one body molding of polypropylene
  - \* Basket: molding of polypropylene
  - \* Leg part: resin

\* Pressure-resistant: 700kPa (43°C)

\* Product weigh: 45kg

\* Contact caliber: 50A screw-in

- Filter bag

\* Opening: poly-rock

\* Filter: polypropylene

\* Diameter: 152nm

\* Length: 508 nm

\*Surface area: 0.2 m<sup>2</sup>

\* Passing water volume: 150-200L/min

- Cartridge

\* Seal part: poly-seal

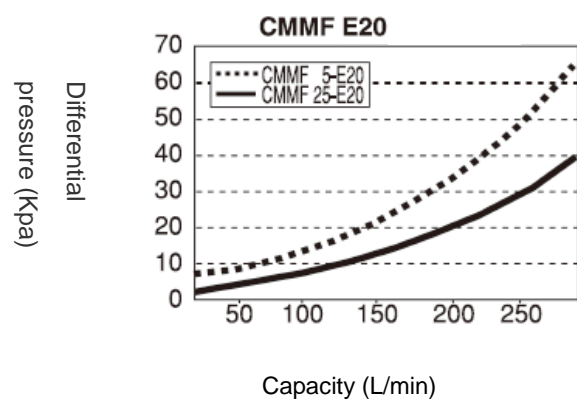
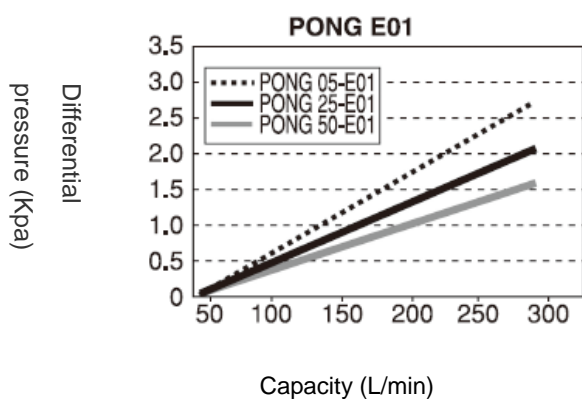
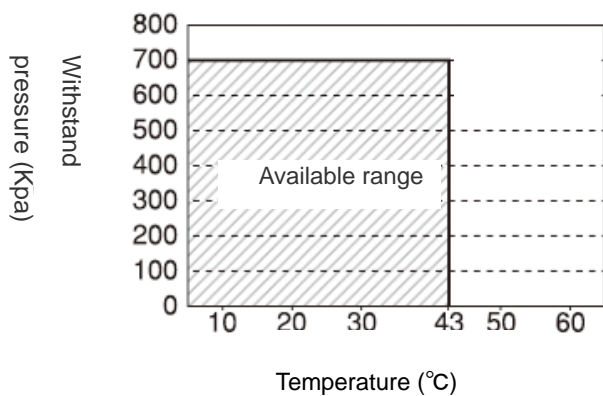
\* Filter: polypropylene microfiber

\* Diameter: 140nm

\* Length: 590 nm

\*Volume: 8,200 m<sup>3</sup>

\* Passing water volume: 150L/min



■ Applications/Experience

- Machine work: Separation of suspend solid - liquid (ceramic polishing solvent, printed board polishing solvent, coolant solvent)
- Surface preparation: Before/after- treatment of alkali removal of fat, various electric plating solvent, precious metal plating(activated carbon), no treatment solvent of activated carbon and zinc etc.

- Water treatment: Industrial water supply(ground water, reservoir/lake), drainage water, pre-filtration etc.

■ **Reference**

**Elepon E.C.A.P. Corporation**

Shin-Daibiru Bidg, 1-2-1,Dojimahama,Kita-ku,Osaka,530-0004,Japan

E-mail : [sales@elepon.co.jp](mailto:sales@elepon.co.jp)

URL : <http://www.elepon.co.jp>